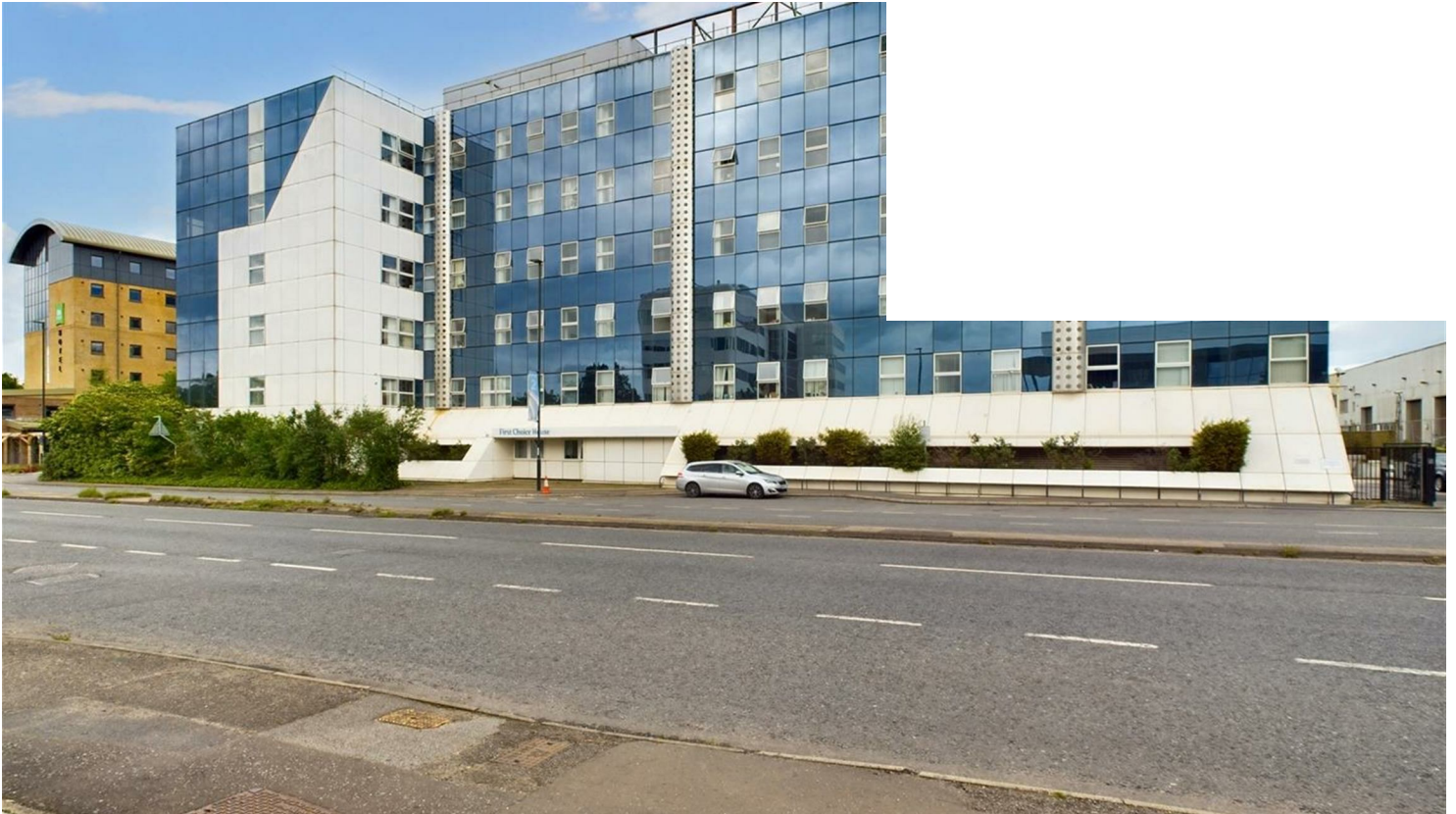




ASTON



**London Road
Lowfield Heath, West Sussex RH10 9GX**

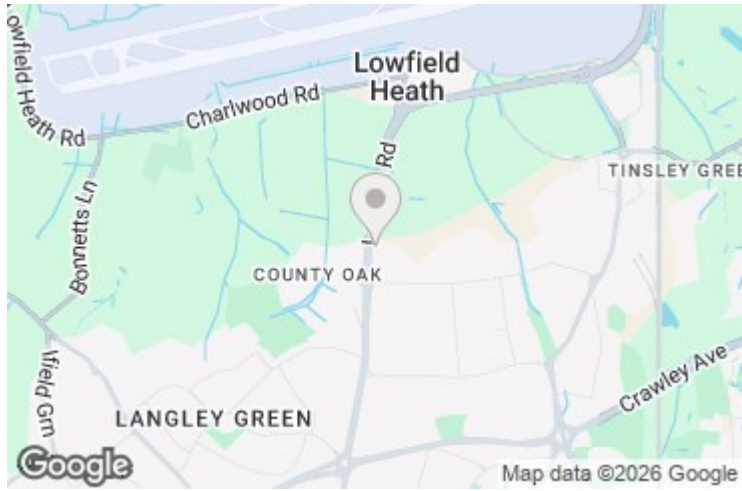
£1,400

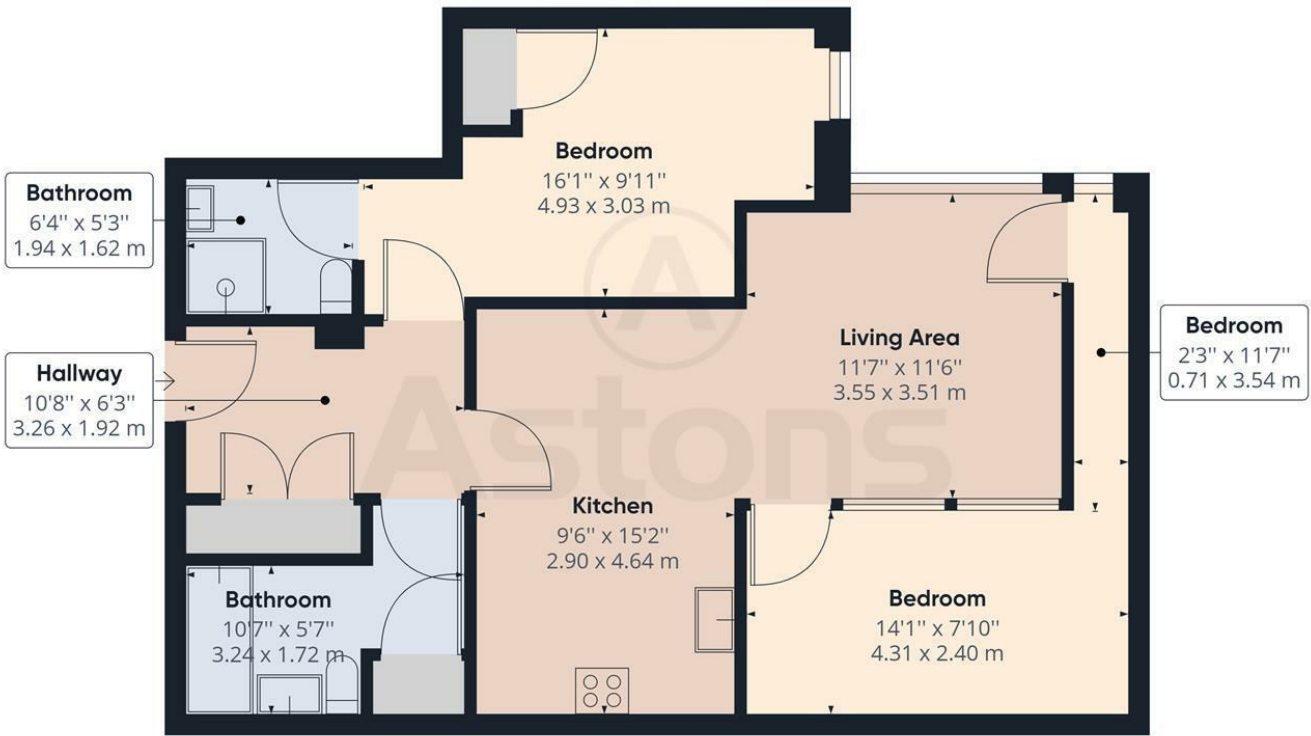
* Two bedroom apartment * gated development * one underground allocated parking space * excellent access to Gatwick and Crawley town centre * en-suite shower room * spacious kitchen *

Available from 24th July 2026 *

London Road, Lowfield Heath, West Sussex RH10 9GX

Members of the property ombudsman
Members of CMP for client money protection
holding deposit equivalent of one week rent
security deposit equivalent 5 weeks rent



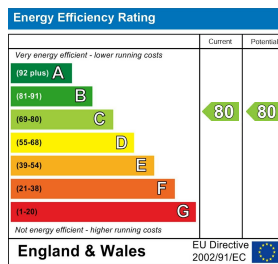


Approximate total area⁽¹⁾
747.94 ft²
69.49 m²

(1) Excluding balconies and terraces

While every attempt has been made to ensure accuracy, all measurements are approximate, not to scale. This floor plan is for illustrative purposes only.

GIRAFFE360



RESIDENTIAL SALES | NEW HOMES | PROPERTY INVESTMENT | LETTINGS | MORTGAGES



Astons Sales and Lettings Ltd, 32 High Street, Crawley. RH10 1BW
01293 611999 | www.astons.org | sales@astons.org | lettings@astons.org

Registered address: Bassett House, 5 Southwell Park Road, Camberley, GU15 3PU. Reg No: 05149486 (England and Wales)

